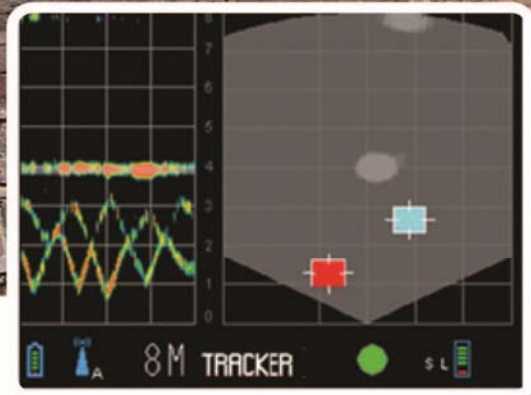


XAVER™ 400

COMPACT, TACTICAL THROUGH-WALL IMAGING SYSTEM



Xaver™ 400 User Interface

The **Xaver™ 400** is a compact Radar based device, optimized for quick tactical decision making in urban operations. It provides real-time mission-critical information on live and static objects hidden behind walls and barriers, including:

- **Presence of Life in the Room**
- **Number of People and Their Location Inside a Room**
- **Tracking of Target Movement Patterns**
- **General Layout of Room, Including Dimensions and Major Infrastructure Elements**

Military and law enforcement teams conducting urban operations require reliable information for determining the necessary tactical approach to help ensure a successful mission execution. The **Xaver™ 400** dramatically improves situational awareness – providing a clear operational advantage and the ability to “**step into the known™**.”

XAVER™ 400

COMPACT, TACTICAL THROUGH-WALL IMAGING SYSTEM

Specifications:

Penetrable Wall Materials:	Cement, plaster, brick, concrete, reinforced concrete, adobe, stucco, draywall and many other standard building materials
Detection Range:	4m (13 ft.), 8m (26 ft.), 20m (65 ft.)
Field of View:	120° in both Azimuth and Elevation
Display Views:	Plain view, side view and range over time (history)
Operational Modes:	Tracker, Expert, High Penetration
Frequency Range:	3GHz to 10GHz
Approx. Resolution:	Range: Better than 5cm (2.0") Cross Range: Better than 50cm (20.0") @ 8m (26 ft.)
Approx. Dimensions (l x w x d):	37.0 X 25.5 X 12.0cm (14.5 X 10.0 X 4.7")
Approx. Weight:	3.2kg (7.0 lbs) including batteries
Power Supply:	Rechargeable and primary batteries, mains power source
Approx. Battery Operation Time:	2.5 hours via rechargeable battery and 4.5 hours via primary battery (Total 7 hour run time)
Wireless Capability:	Optional built-in wireless module for remote monitoring and control
Accessories:	External battery charger, ruggedized carry case, tactical backpack



Features:

- Optimized rugged compact design
- Ready to use at the push of button
- Highly reliable detection through most common wall materials
- Simple user interface for intuitive interpretation
- Tracking capabilities
- Simultaneous detection of static and living objects
- 20m (65 ft.) detection range
- Enables "Stand-Off" operation (within detection range)
- Sensitivity to detect non-moving live objects.
- Unique algorithms and signal processing
- Optional wireless capability for remote monitoring and control

Technology:

The *Xaver™ 400* utilizes a state-of-the art system architecture, encompassing multiple cutting edge technologies. A unique, multi-channel and micro-power Ultra-Wideband (UWB) sensor that operates at very high bandwidth enables reliable detection and high object resolution. Mathematical image reconstruction algorithms are used to cope with cluttered environments resulting in a high quality and intuitive image. Simple operation and compact packaging are key features of the design.



Canadian Law Enforcement and Military Agencies please contact Enforcement Technology Group, Inc. (ETGI) at 414-276-4471 or email info@etgi.us for additional information and pricing.

Radiation Safety:

The *Xaver™ 400* is completely radiation safe. It is designed to provide superior performance while meeting the requirements of ICNIRP-1998 radiation exposure restriction.